

# Spalding Drive at Chamblee-Dunwoody Road / Spender Trace / Spalding Club Court

Intersection Improvement Community Meeting  
February 25, 2014

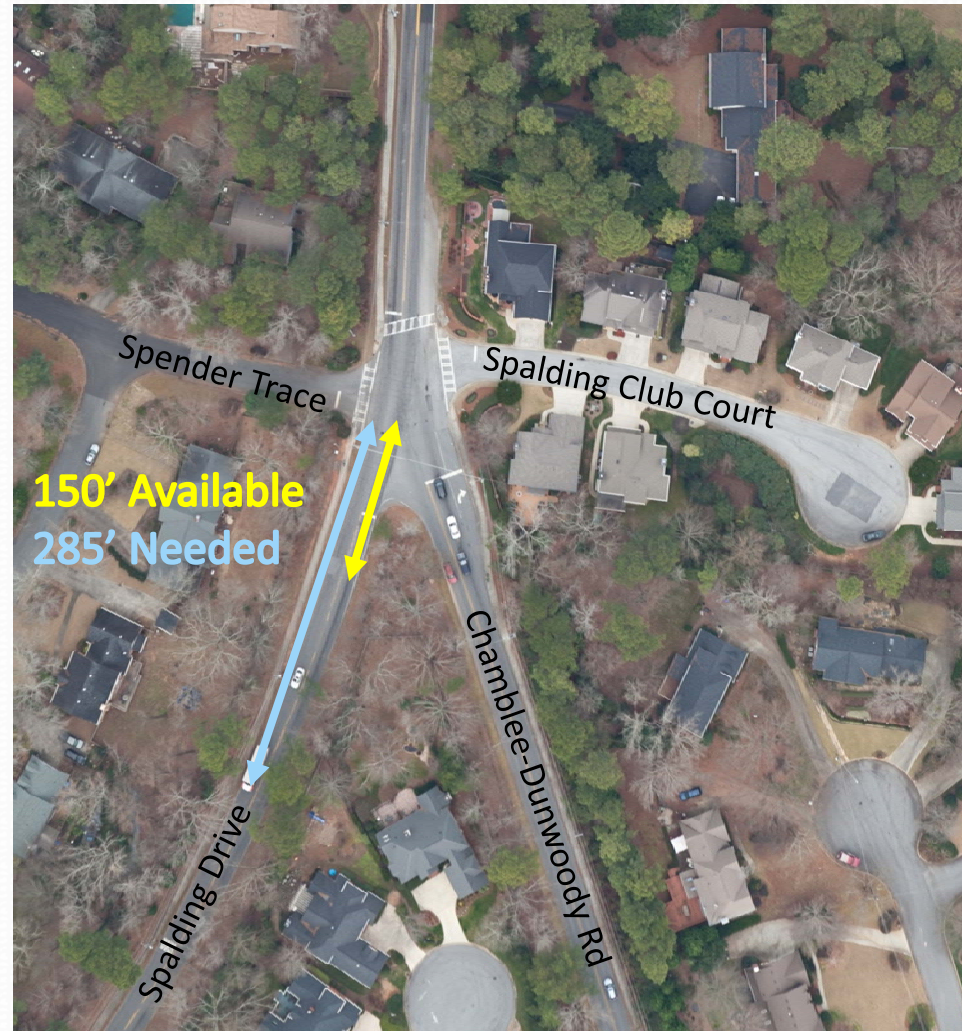
# Presentation Agenda

- Project Need and Purpose
- Community Outreach
- Discussion of Concepts
- Next Steps



# Project Need and Purpose

- Tier 1 Safety Improvement Project
- Accident History
- Pedestrian facilities
- Sight Distance
- Speeding



# Community Outreach

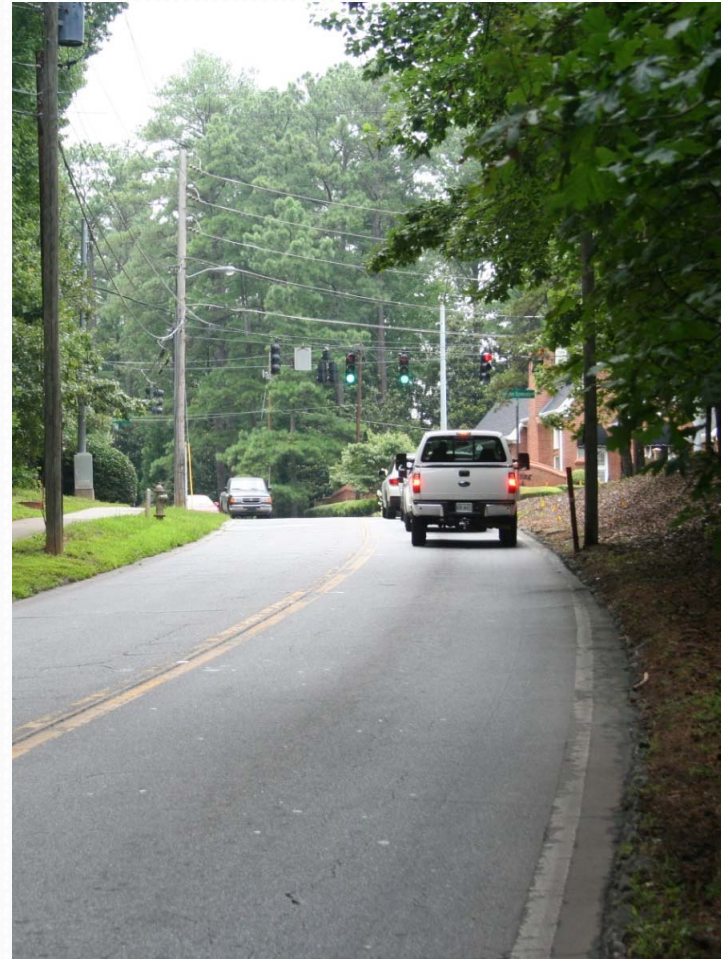
- Surrounding neighborhoods
- Consulted City of Sandy Springs
- Asked Questions
- Listened Carefully





# Community Outreach: Primary Concerns

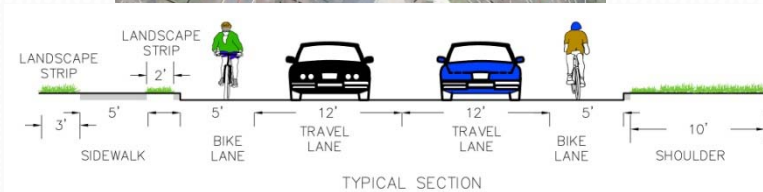
- Safety Concerns
- Traffic Operations (Congestion)
- Pedestrian Access & Connectivity
- Preservation of Community Character
- Property Impacts



# Option A Left Turn Lanes

- Add Left Turn Lanes on Spalding
- SB Left Turns on Green Arrow Only

Criteria	
Open Year LOS (2016)	C/C
Design Year LOS (2036)	F/E
Total Cost	\$900,000
Required R/W	0.12 acres
Reqd. Easements	0.08 acres
Additional Challenges	<ul style="list-style-type: none"> <li>• Sight Distance Issues Remain</li> <li>• Safe but inefficient</li> </ul>



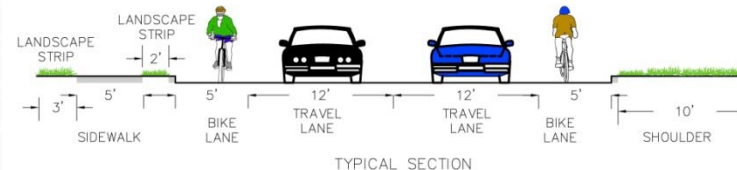


# Option B1/B2

## Left Turn Lanes Plus Fill

- Includes Option A Improvements
- Corrects Sight Distance Issues  
SB Left Turns on arrow and yield

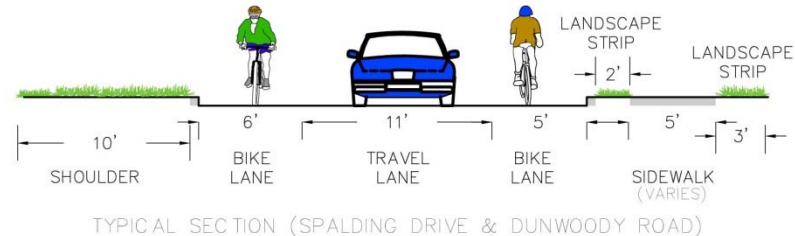
Criteria	
Open Year LOS (2016)	B/C
Design Year LOS (2036)	C/D
Total Cost	\$1.25-\$1.35M
Required R/W	0.12 acres
Reqd. Easements	0.13-0.20 acres
Additional Challenges	• Overlaps City Boundaries



# Option C One Way Trio

Changes to traffic pattern allow signal to remain green for main street 95% of the time

Criteria	
Open Year LOS (2016)	A/A (Signal)
Design Year LOS (2036)	B/B (Signal)
Total Cost	\$900,000
Required R/W	0.18 acres
Reqd. Easement	0.04 acres
Additional Challenges	<ul style="list-style-type: none"> <li>• Driver Expectancy</li> <li>• Turn Restrictions</li> <li>• Overlaps Cities</li> <li>• Further study will be needed</li> </ul>

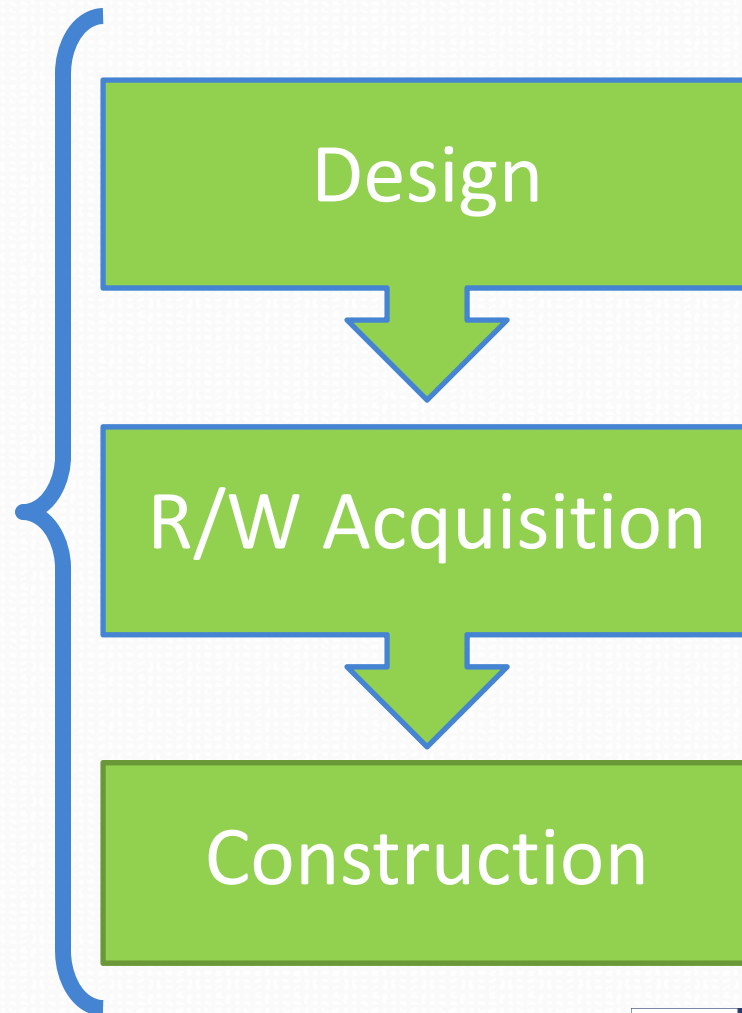




# Next Steps

## Public Involvement

- Open House Format
- Collect and Analyze Public Feedback
- Presentation to City Council(s)
- Both Cities to Provide Direction/Program



# Additional Information

Michael Smith, Director of Public Works

[Michael.Smith@dunwoodyga.gov](mailto:Michael.Smith@dunwoodyga.gov)

Mindy Sanders, Capital Projects Manager

[Mindy.Sanders@dunwoodyga.gov](mailto:Mindy.Sanders@dunwoodyga.gov)

[www.dunwoodyga.gov](http://www.dunwoodyga.gov)

[http://dunwoodyga.gov/Departments/Public\\_Works/ChambleeDunwoodySpalding.aspx](http://dunwoodyga.gov/Departments/Public_Works/ChambleeDunwoodySpalding.aspx)

