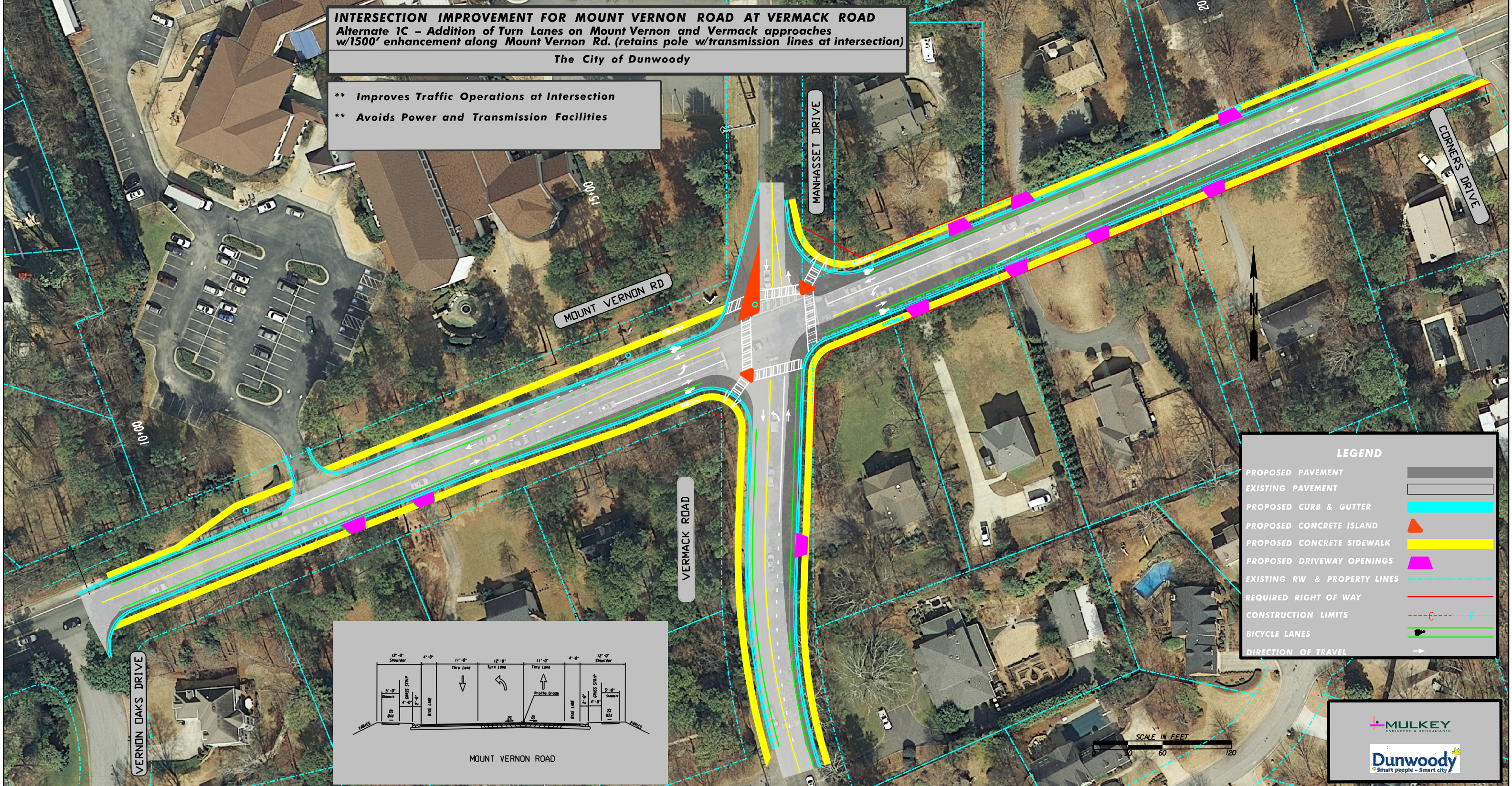


**INTERSECTION IMPROVEMENT FOR MOUNT VERNON ROAD AT VERMACK ROAD**  
**Alternate 1C - Addition of Turn Lanes on Mount Vernon and Vermack approaches**  
**w/1500' enhancement along Mount Vernon Rd. (retains pole w/transmission lines at intersection)**

The City of Dunwoody

- \*\* Improves Traffic Operations at Intersection
- \*\* Avoids Power and Transmission Facilities



**LEGEND**

- PROPOSED PAVEMENT [Grey Box]
- EXISTING PAVEMENT [Light Grey Box]
- PROPOSED CURB & GUTTER [Cyan Line]
- PROPOSED CONCRETE ISLAND [Orange Triangle]
- PROPOSED CONCRETE SIDEWALK [Yellow Line]
- PROPOSED DRIVEWAY OPENINGS [Magenta Polygon]
- EXISTING RW & PROPERTY LINES [Dashed Cyan Line]
- REQUIRED RIGHT OF WAY [Solid Red Line]
- CONSTRUCTION LIMITS [Dashed Red Line]
- BICYCLE LANES [Green Line]
- DIRECTION OF TRAVEL [White Arrow]

